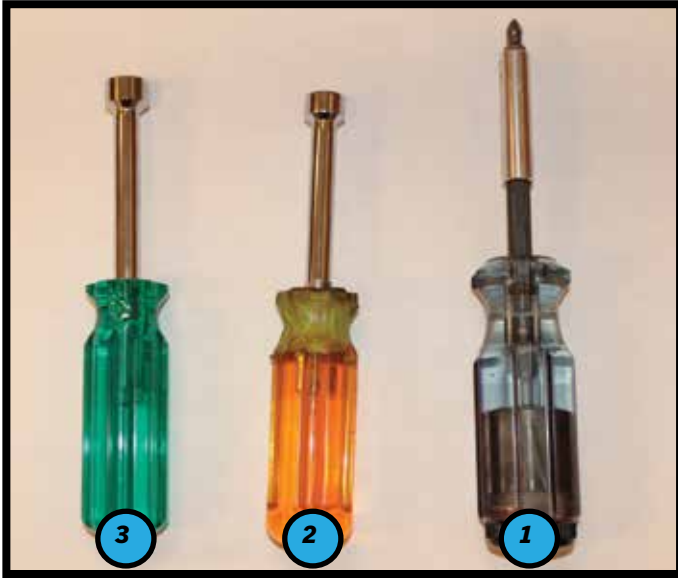




VE1021017 - INGENICO TO LYNK READER UPGRADE KIT

Tools Needed



1

Phillips screw driver

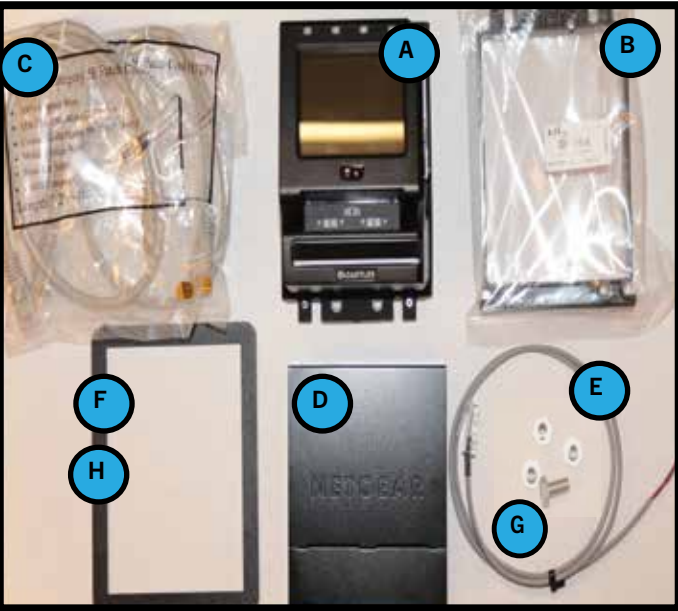
2

5/16" Nut Driver

3

11/32" Nut Driver

Parts Needed



A

PART

Castle reader

Part Number

VE6785

Quantity

1

B

Castle spacer

ME1250024284P

1

C

Ethernet

VE1015494

2

D

5-Port Ethernet Switch

VE1021039

1

E

Castle Harness

VE1018652

1

F

Double sided tape

VE1018392

1.25 FT

G

Hex Mounting Adapter

ME1250031081P

4

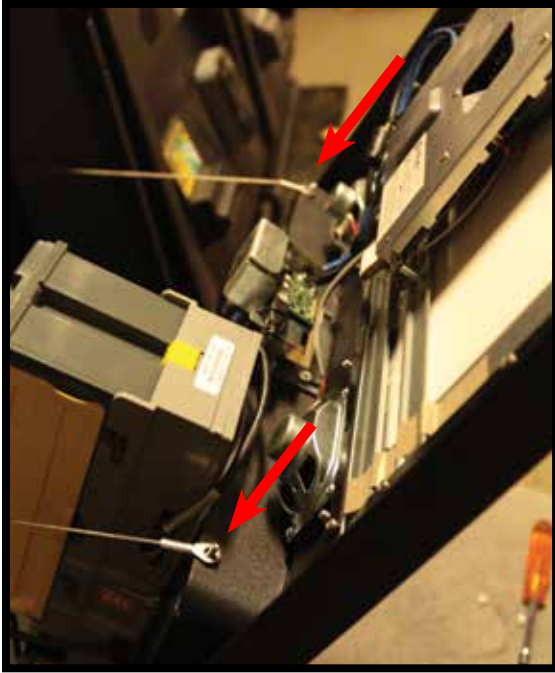
H

Payment Bezel

VE1018382

1

VE1021017 - INGENICO TO LYNK READER UPGRADE KIT



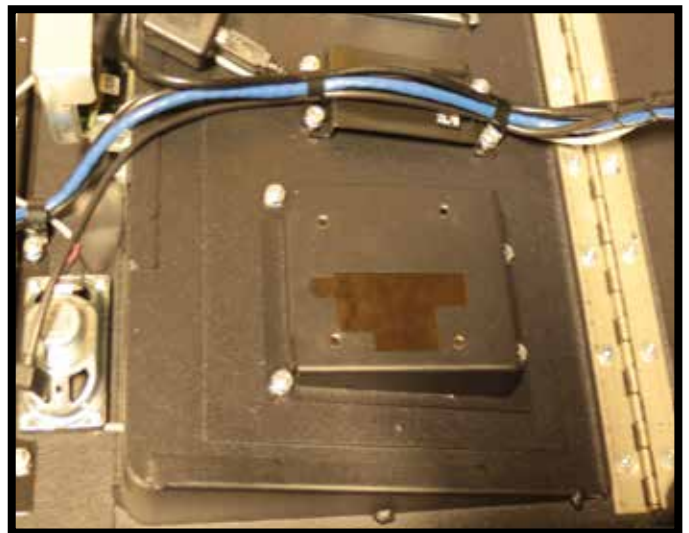
1.) Unlock kiosk and lower front door. Remove the Nuts holding the door up as shown in the image above.



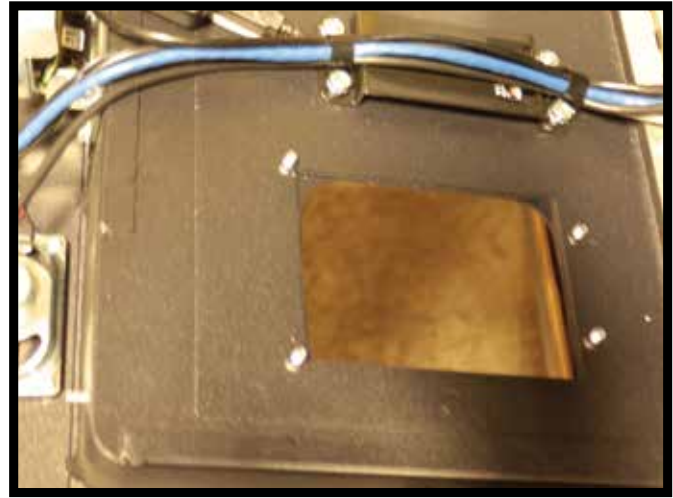
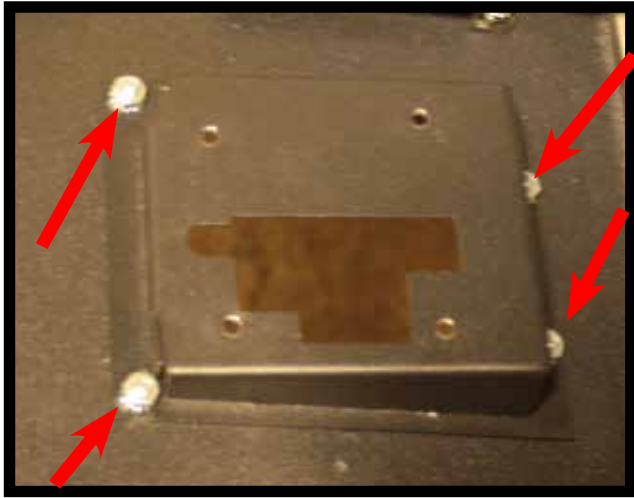
2.) Once the door is detached, Lay it flat on some sort of cushioning. This will allow the door to lay flat without damaging the screens.



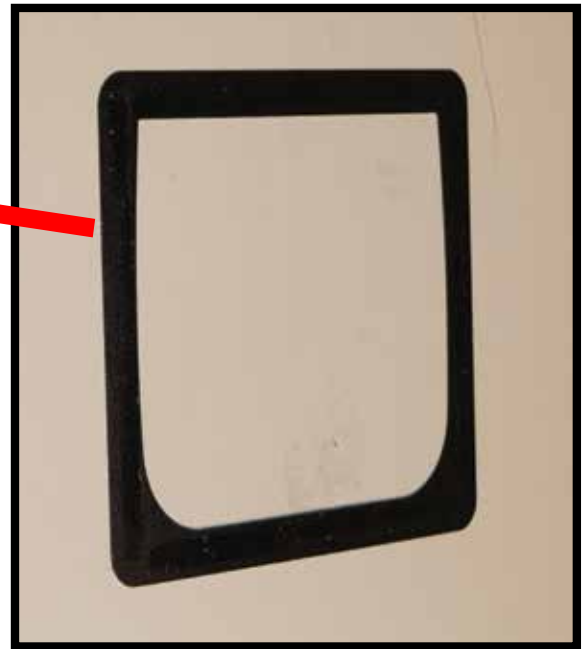
3.) Unplug the USB (VE1015711) cord from the Ingenico reader. Next remove the 4 screws indicated in the picture. Ensure you leave one hand holding the Ingenico reader as it will fall out once released.



VE1021017 - INGENICO TO LYNK READER UPGRADE KIT

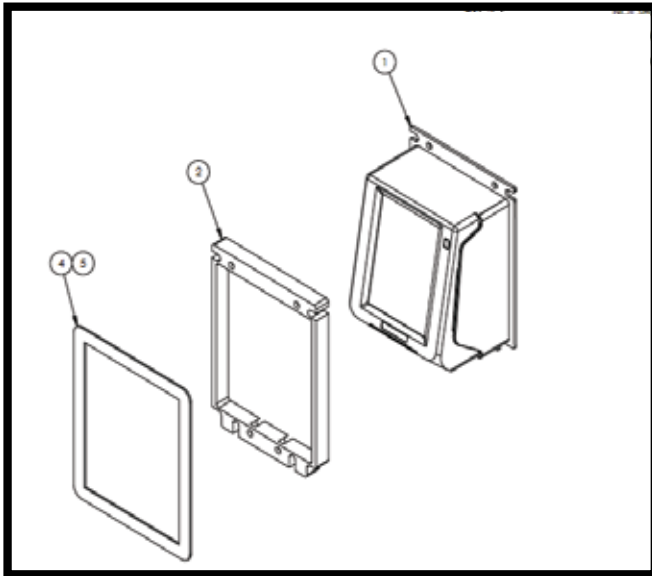


4.) Remove the 4 nuts as shown in the picture above. This will allow you to remove the Ingenico bracket.



5.) In order to secure the new castle Lynk reader you will need to remove the old bezel. This is being held on with double sided tape, if necessary use a tool for removal.

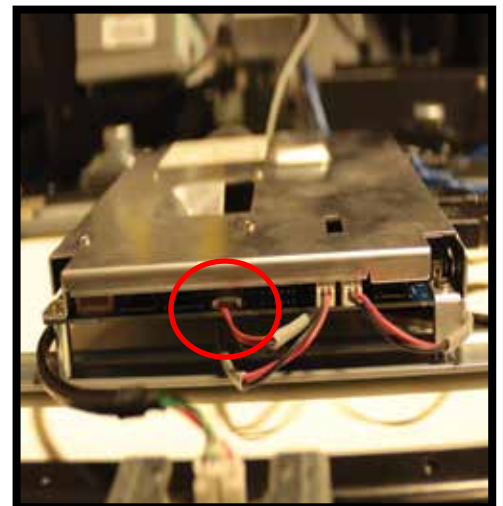
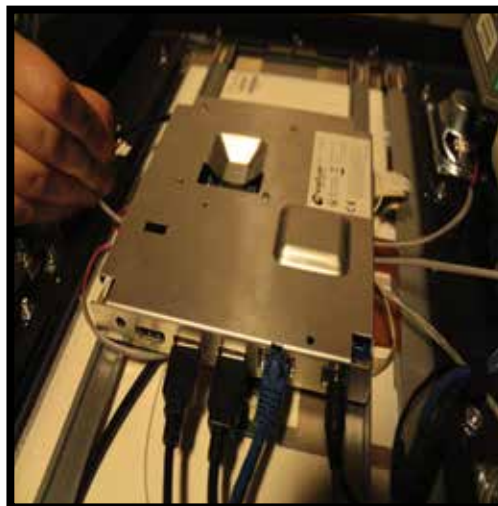
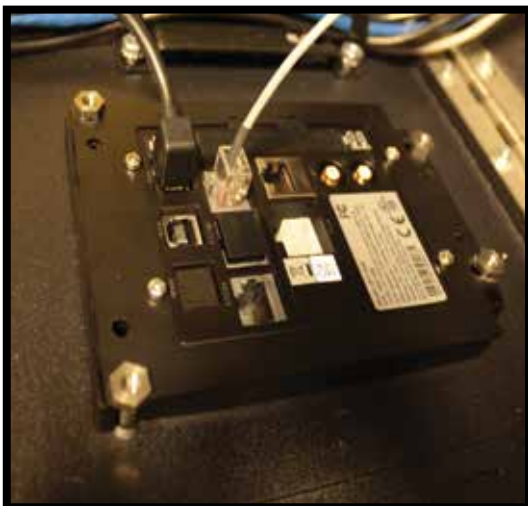
VE1021017 - INGENICO TO LYNK READER UPGRADE KIT



6.) Secure the New castle Spacer over top of the Castle reader. Insert into the Kiosk so that it can be secured in the next step.

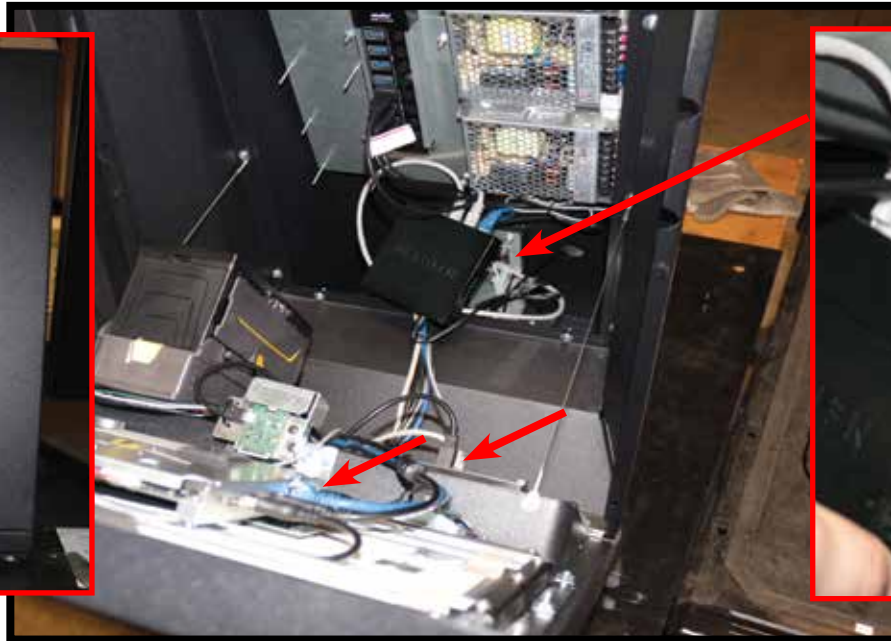


7.) Using the Hex mounting adapters (MEI250031081P) secure the castle reader to the kiosk using the 11/32 Nut Driver. Secure each mounting hex before tightening all the way. This will ensure it is secured properly.



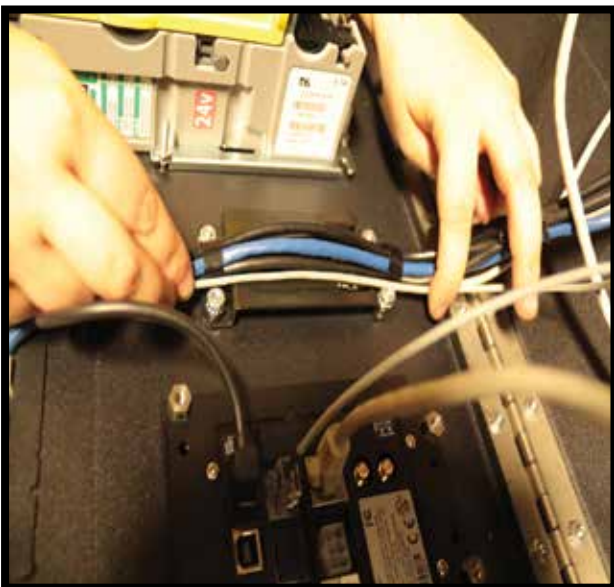
8.) First plug in the USB (VE1015711) that was with the original parts. Then Plug in the castle Harness into the back of the castle reader into the designated port. Once connected insert the loose end of the harness under the screen as shown in the picture above. Lastly secure the Harness into the third port on the screen, as circled above. Use a tool if necessary.

VE1021017 - INGENICO TO LYNK READER UPGRADE KIT

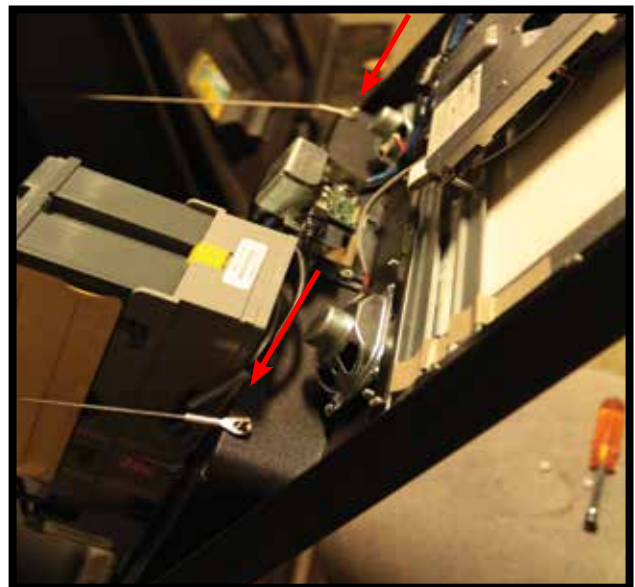


9.) Remove the grommet from the back of the kiosk and insert the Switch Power supply into the kiosk cabinet, then connect to the Switch. Connect the preexisting Ethernet cable from the screen into the Switch.

9.) Now take the two new Ethernet cables from the kit and connect one into the payment system and the other into the Input Board. Ensure the two Ethernet cords are secured into the second and third slot on the switch. Switch should now be connected. (Feel free to secure the Switch in the kiosk cabinet if desired)



10.) Clean up the Loose harnessing and cords using the preexisting Clips and cable ties. Best practice to keep kiosk cabinet Clean.



11.) Lastly raise the Kiosk door and secure the arms onto the studs indicated in the Picture. Secure the nuts that you removed earlier. Door is now ready to be closed and Locked.